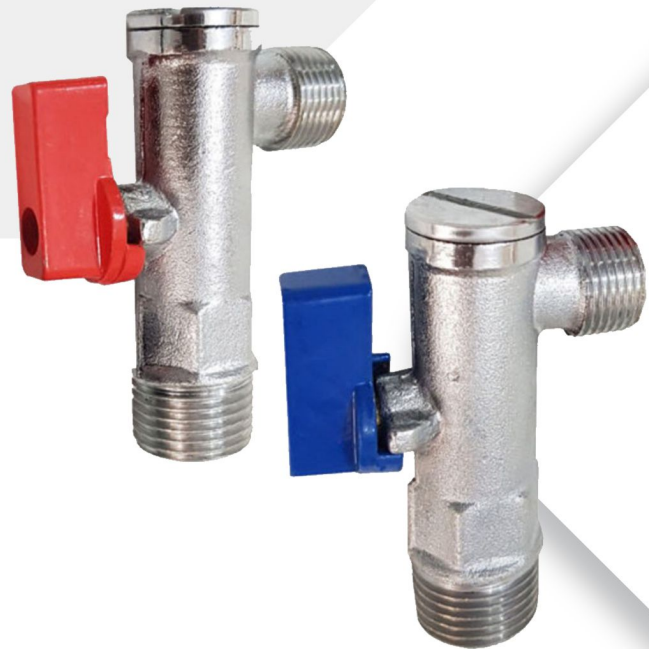


PISVAR VALVE

1/2" and 3/8"



- The pisvar valve is a regulator that is connected to hot and cold water pipes so that we can easily turn off the water in the desired area if needed.
- It is good to know that each cold and hot water pipe needs a separate pisvar valve, for example, a sink and a dishwasher that have cold and hot water pipes have a pisvar valve on the outlet of each of them. Of course, the use of these valves is not limited to water control in homes and residential buildings, and other uses can be mentioned in the industry, which are used to control gas pipes, water and other fluids.
- Pisvar valves are produced in two types, with and without filters. These two models are not much different, the only difference is that the filter model can remove the pebbles and coarse pollution in the water; But this capability does not mean water purification, and if you live in areas with high water hardness, you need a water purifier. In order for the filtered pisvar valves to have the best performance, you need to change the filter every three months.



SPECIFICATIONS

- Pisvar valves are usually made of brass, cast iron, lead and plastic, the best of which are cast iron and brass. Due to the higher efficiency and quality as well as higher satisfaction of brass and cast iron valves, the company produces this type of valves in brass and cast iron at the customer's request.
- There is usually a coating of nickel and chrome on the body of these valves.
- These valves are very resistant to rust.
- The Pisvar valves can withstand high water pressure and high temperature up to 100°C.
- The plastic handle of the pisvar valves is marked with two colors, red and blue, according to its use for hot or cold water pipes.
- One of the other remarkable features of this valve is its long life. Once installed, you will not need to replace or repair it.
- Pisvar valves are made in two models with filter and without filter. The efficiency of these two is the same, but the filter valve is used in places where there are small stones and all kinds of sediments in the water of that area.
- Two very common sizes of these valves are 1/2 and 3/8 inches, which are used according to the type of place they are installed.

USE:

The important uses of these valves in homes are for sinks, wash basins, toilets, washing machines and dishwashers.